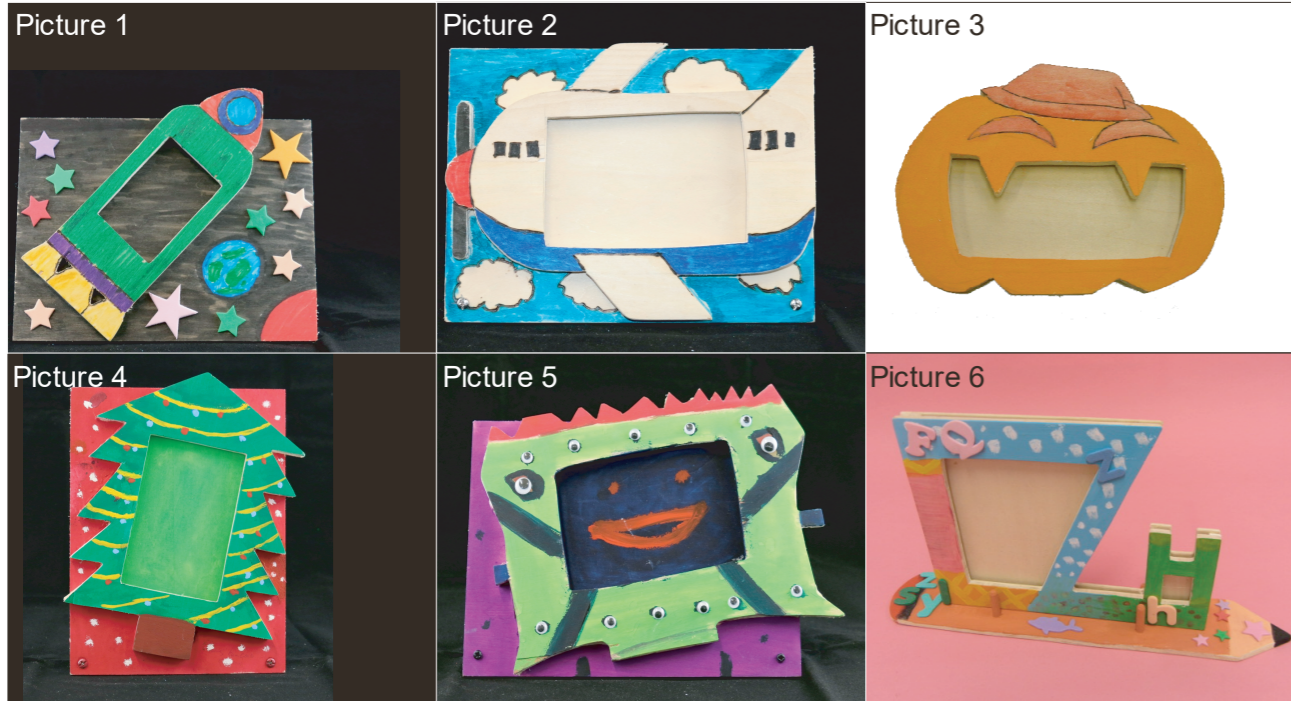


Sample Products/ Evaluations

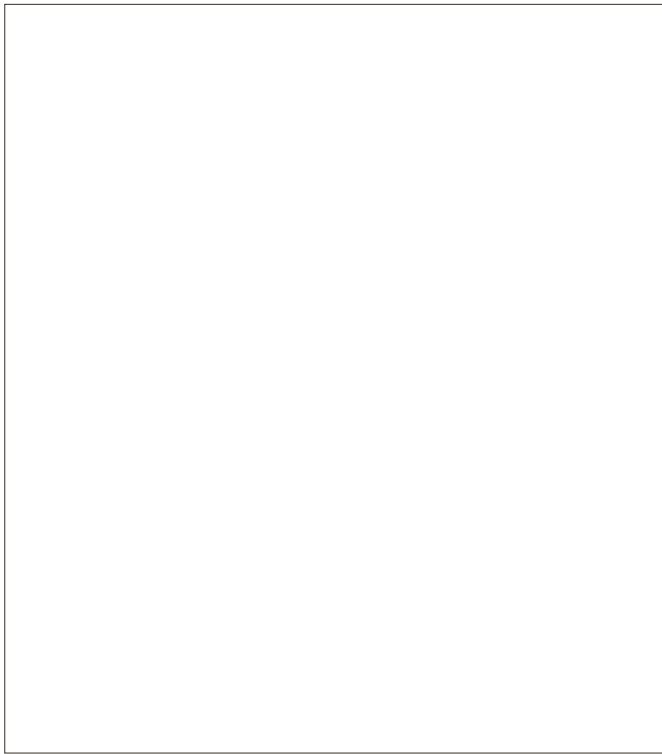
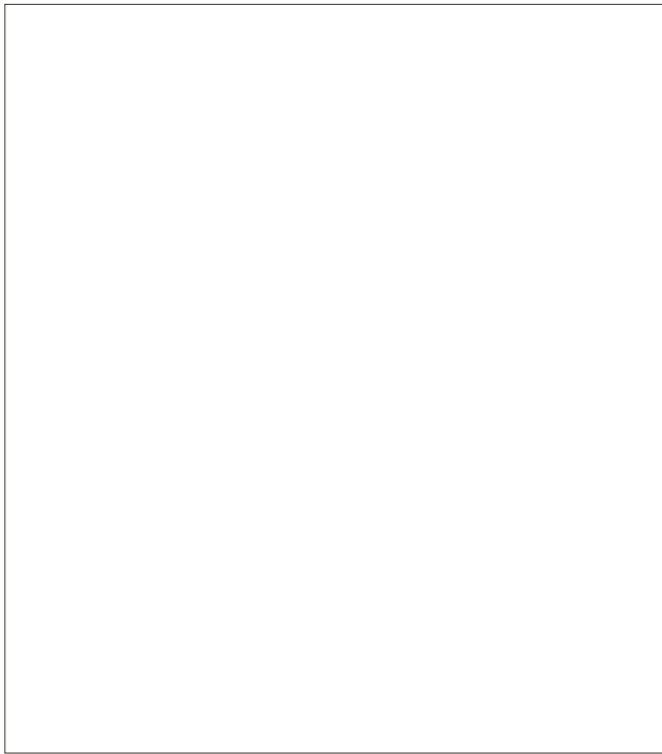


My favorite design is picture no. \_\_\_\_\_ because \_\_\_\_\_ .

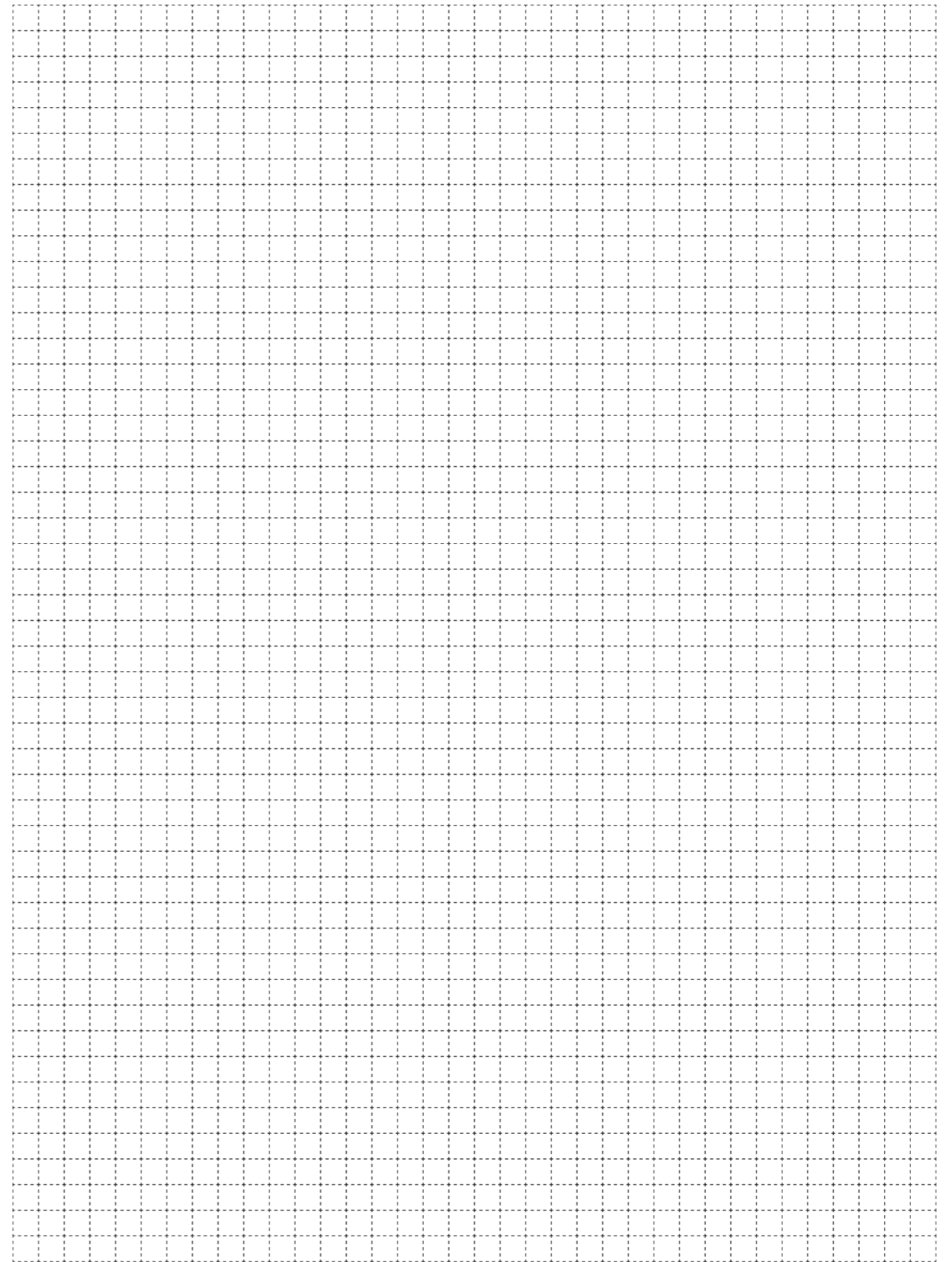
Design Analysis

Where is the photo frame placed? ( Desktop / Bookshelf / Windowsill / Others: \_\_\_\_\_ )

Will photo frame place portrait or landscape?

<p>Design Drawing 1:</p> 	<p>Design Drawing 2:</p> 
--	---

Final Drawing



作品欣賞與評鑑



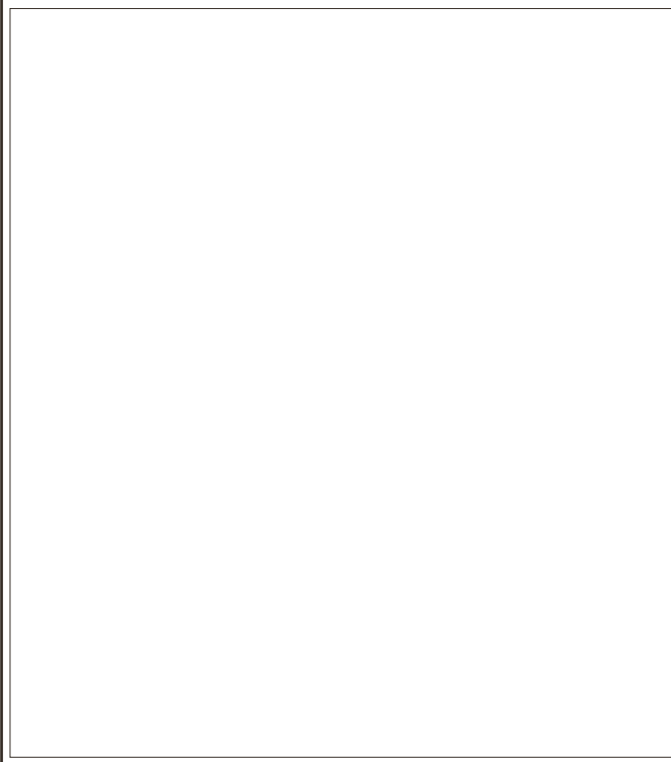
我最喜愛是圖 \_\_\_\_\_ 的設計，原因是 \_\_\_\_\_。

設計構思

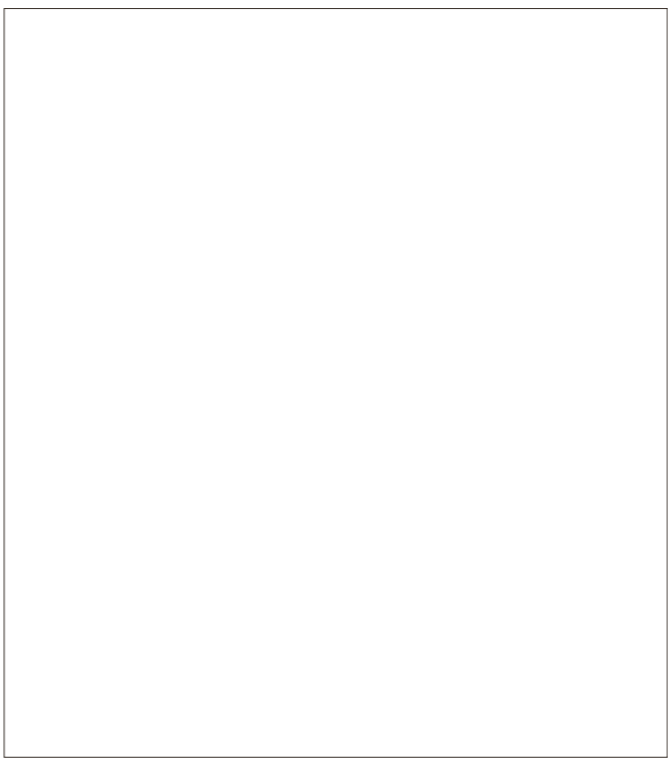
相架將會放在那裡？(書桌 / 書架 / 窗台 / 其他 \_\_\_\_\_)

相片橫放還是直放？(橫放 / 直放)

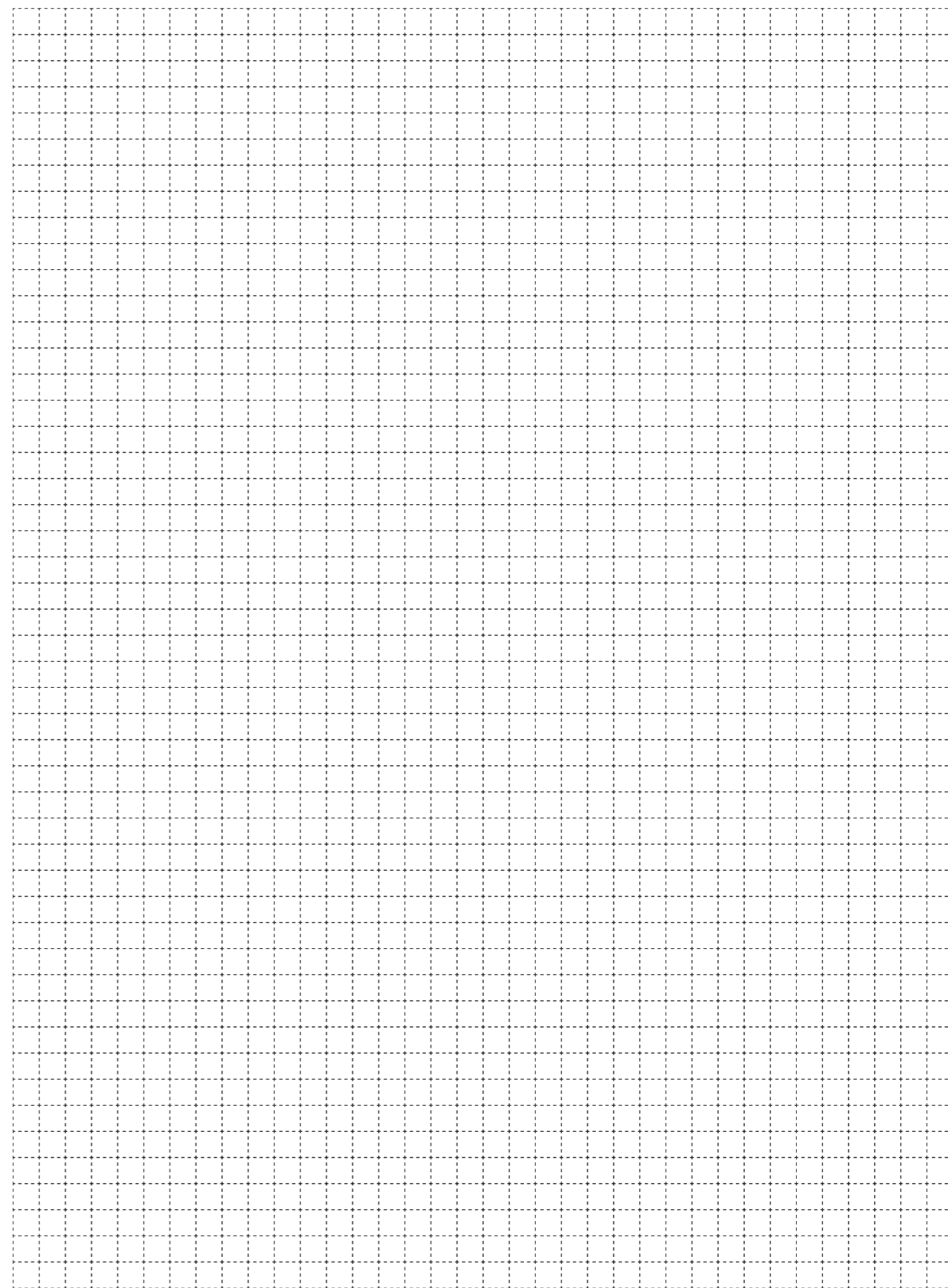
設計圖 1



設計圖 2



設計圖





## Photo Frame Project Guideline

### Student review and Self evaluation

1. List the tools you've used in the working process.

---

2. List the design element(s) and design principle(s), you've applied in the project.

---

3. When the product finish, are there any difference between the finished product and the preliminary design composition? Yes / No

4. Please comment about your design concept

Cannot meet the requirement 0 1 2 3 4 5 6 7 8 9 10 Outstanding

5. Please comment about your working skill

Cannot meet the requirement 0 1 2 3 4 5 6 7 8 9 10 Outstanding

<u>Teacher Comment</u>			Marks
Design Process 40%	Drawing Technique	Freehand Sketch Drawing tool: pencil and paper Quality of Line Drawing skill of Straight and Curve Line	
	Design Concept	Data Collection Sketch and Drawing Creativity of Shape and Form	
			/40
Production Process 50%	Finishing	Safety: No sharp edges and corners, Moderate intensity, no easily broken Crafts: Accuracy, Surface finishing Correct / Good use of materials Correct / Good use of technology and skill	
	Function of the product	Function Exterior: Shape, Form, Color, Texture, Scale Work attitude	
			/50
Project Guideline 10%	Content	Participation Tasks completed	
			/10
Total			/100

Name : \_\_\_\_\_ ( )

Course Code : \_\_\_\_\_

## Photo Frame Project Guideline

### Situation

A beloved photo was taken. Hope to present this photo on desktop.

### Design Brief

Design and make a photo frame that a 2R or 3R photo can be inserted.

### Specification

1. Photo frame can stand stably.
2. Can be presented on a ideal angle.
3. Photo can be change easily.

### Design suggestion

Will photo frame place portrait?

Is the photo changed easily?

What is the out shape to be design? What is the shape of the photo window?

What design element(s) is/are included? Shape, Color, Texture, Space, Form?

What design principle(s) is/are included? Balance, Unity, Direction, Scale?

Are there any other decoration?

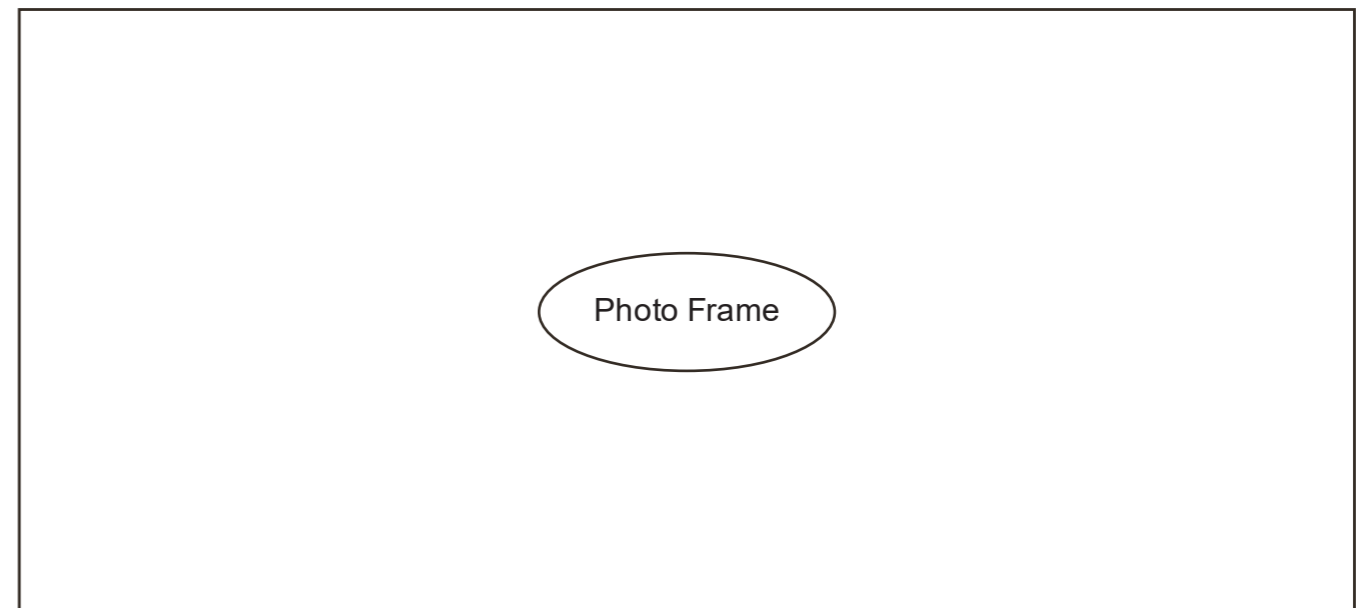
### Material used

1. \_\_\_\_\_

2. \_\_\_\_\_

3. \_\_\_\_\_

### Analyze before producing product



\* 請在適當位置加上圈

學生檢討及自評

請列出在製作過程中，曾使用過的工具名稱

---



---

請列出製成品使用了那些設計元素及設計原理：

---



---

\* 當完成製作過程後，製成品與初步設計構圖有沒有分別呢？ 有 / 沒有

請給自己的作品評分 ( 0 - 10 )

\* 完全達不到要求 0 1 2 3 4 5 6 7 8 9 10 表現優秀

老師評分			分數
設計及傳意 40%	繪畫技巧	徒手立體圖 斜視徒手圖 等角徒手圖 投影圖	/40
	設計意念	資料搜集 草繪及繪圖 創意: 形狀、造型	
學生作品 50%	表面處理	安全: 無尖角利邊、成品自身強度適中，不會輕易破爛 工藝: 準確度, 表面處理的質量 正確使用/善用材料 正確使用/善用科技及技術	/50
	習作功能	功能 外觀: 形狀、造型、顏色、質感、大小比例 工作態度: 包括投入工作、下課時整理工作枱、課堂行為、對工作有要求	
習作指引 10%	內容	參與及投入程度 課業完成 任務/活動完成	/10
總分			/100

學生姓名： \_\_\_\_\_ ( )

課程編號： \_\_\_\_\_

情境

最近拍攝了一張心愛的照片，希望可以放在案頭上。

設計綱要

設計並製作一個相架，並可以安放一張2 R 或3 R 的相片。

規格

此設計必須穩定地安放好。

能以特定角度展示。

相片容易更換。

設計提示

相架是橫幅還是直幅？是否可以隨時置換？

外形設計怎樣？內框形狀如何？

會使用那些設計元素？點、線、面、顏色、形狀、質感？

會採用那些設計原理？對稱平衡、不對稱平衡、動感？焦點、比例？漸變、放射？

有什麼裝飾品？

什麼角度適合觀賞照片？

材料選擇

1. \_\_\_\_\_

2. \_\_\_\_\_

3. \_\_\_\_\_

考慮因素

